

## Model 142

greater durability, stronger splice

The multi-purpose splicer for low-count synthetics and staple. The Model 142 sets a new standard as an effective, flexible, and user-friendly tool for normal continuous-filament synthetics and natural fibres used in the manufacture of traditional textiles, such as apparel. The range has been designed to be simple and durable. The splicers are tough, reliable, and easy to maintain, and are capable of dealing with a wide range of yarn counts. The 142 occupies the market position for which splicers were originally developed – relatively fine yarns for traditional textile applications. The 142 is the ideal splicer for these lower counts. The 142, with its wide range of formats and operating systems, fills this niche perfectly. Hand-held, fixed, or rail-mounted, the 142 can meet most factory needs, and if circumstances change, the 142 is convertible from one form to another. The 141 can be supplied with a blast timer, or with a differential flow control system which supplies low-pressure air to the blast chamber, while keeping full pressure for the cutters.



### Product Specifications

**Splice format:** Ends opposed

**Applications:** All standard textile processes.  
weaving, warp knitting, etc.

**Yarns:** Nylon, Polyester, fine glass fibre,  
low & medium count natural fibres

**Yarn counts:** Nm .5 to 100, 10 to 2000 tex

**Twist:** Zero or low twist c.f. and staple

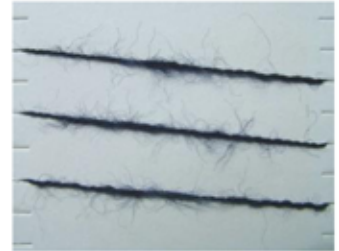
**Construction:** Polymer handle & components  
for greater durability & reliance.

greater bond strength, low to no profile



## Stronger Splice

Ends opposed splicing allows for a much stronger bond rather than ends together (tails), which creates problems with downstream processes (needles, snag points, etc.). The model 142 can create a splice that is 60-100% bond strength. A splice that's barely visible, trouble free, and lasts.



## Polymer Construction

Heavy metal parts & bad seals are a thing of the past through the use of our durable polymer construction. Using industrial 3D printing technology, our simplistic design minimizes moving parts for a better splice.

**Durable** Lasts longer & maintains better seal integrity than bulky, metal splicers.

**Light Weight** Only 1 pound!

**Low Maintenance** Simplistic design affords easy maintenance & longevity with our splicers. Air chambers can easily be changed out if damaged or different size is needed. Customer feedback says our cutter blades cut better and lasts 10x longer than standard splicer blades. Try our sample offer & see for yourself.



## Hands Free Operation

Because of our 3D printing capabilities, Airbond offers simple solutions for your yarn process. Each splicer can include a wall mount attachment built into the handle. Using our easily affordable Easy Mount clips which can be mounted anywhere, operators have a place to mount the splicer while they splice the yarn. Reducing time, frustration, & risk of dropping.



**Easy Mount Clips**

